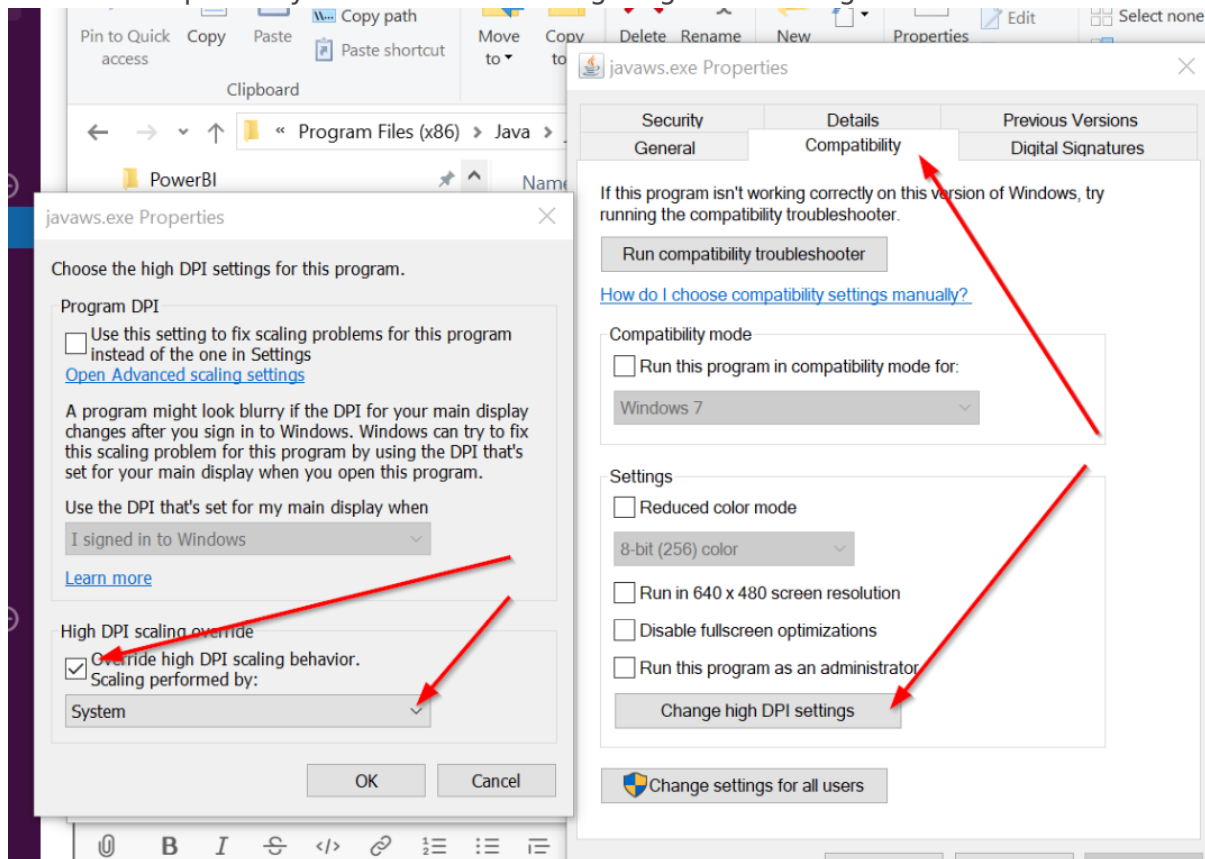


Naviga Circ - Fix the "scrunched windows" issue

1. Close any open DTI windows.
2. You'll need to open File Explorer and browse to where java is installed.
 1. This is frequently here: `C:\Program Files\Open Web Start\`
 2. If still on Oracle, then it would be here: `C:\Program Files (x86)\Java\jre\bin\`
3. Once you're there, locate the file named "javaws.exe" and right-click on it, selecting Properties.
4. Select the Compatibility tab and then "Change high DPI settings"



5. In the new window that opens, check the box for "override high DPI scaling behavior"
6. Make sure the Drop-down for "scaling performed by" is set to "system"
7. Hit OK on each open window to save the changes.

Revision #5

Created 23 March 2020 19:48:20 by Shawn Hoy

Updated 19 June 2023 17:42:39 by Paul Nus